



Area 57
Bismarck, ND



AREA 57

COMMERCIAL SPACE AVAILABLE

ADDRESSES

202, 208, 220, & 226 E. Greenfield Lane,
Bismarck, ND 58503

PROPERTY DETAILS

Area 57	Opened/ Available	Commercial SF	Space Available
A	2022	8,500± SF	8,500± SF
B	2022	9,700± SF	9,700± SF
C	2020	10,300± SF	6,000± SF
D	2020	9,200± SF	1,600± SF

Lease Rates	\$21/SF
CAM	\$5.50/SF
Term	5 Years
Fit-up Allowance	\$25/SF

Subdivided space available. Details and rates are subject to change at any time. Contact for more information.

701.866.1006
EPICCompaniesND.com



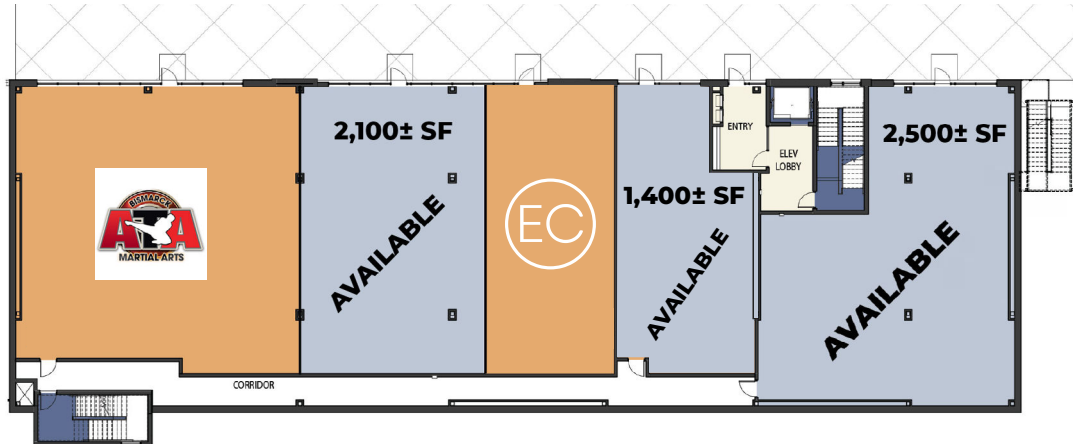
EC EPIC
COMPANIES
Investment • Development • Management



AREA 57 - Phase I

202 & 208 E. Greenfield Lane, Bismarck, ND 58503

208 - BUILDING C 1st Floor



202 - BUILDING D 1st Floor



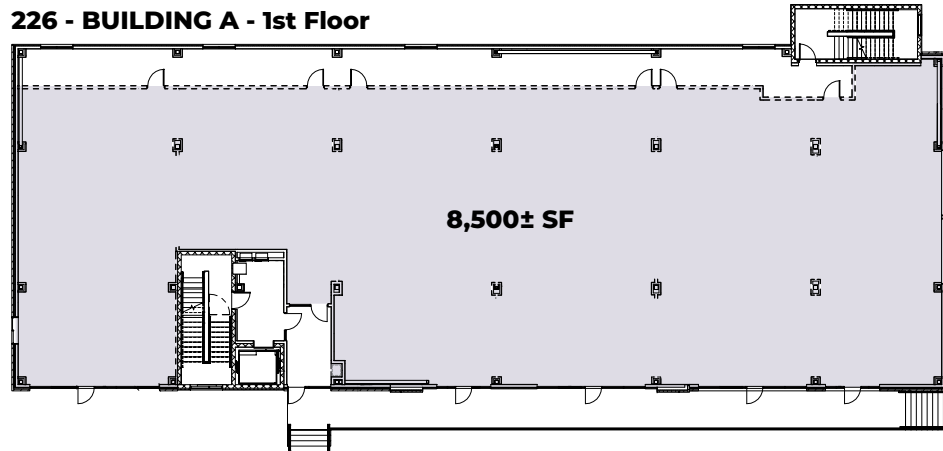
Located between Bismarck Surgical Associates Center and Light of Christ High School.



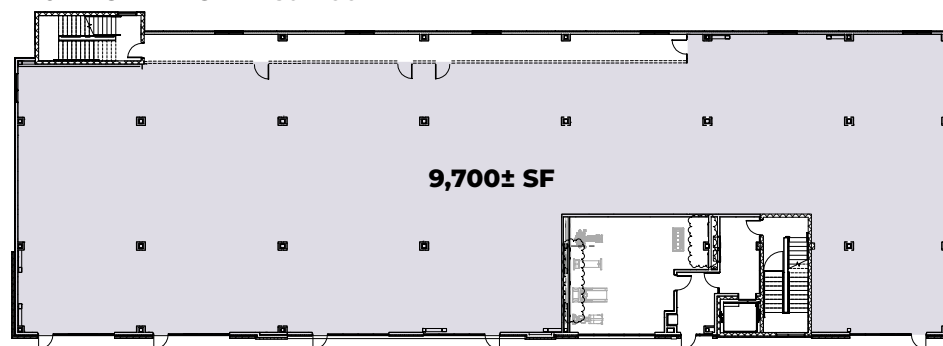
AREA 57 - Phase II

220 & 226 E. Greenfield Lane, Bismarck, ND 58503

226 - BUILDING A - 1st Floor



220 - BUILDING B - 1st Floor



*Subdivided space available



Located between Bismarck Surgical Associates Center and Light of Christ High School.



AREA 57 Project Overview

202, 208, 220, & 226 E. Greenfield Lane, Bismarck, ND 58503



OVERVIEW

AREA 57 is a master-planned mixed-use development that will cater to the growing demand for all lifestyle communities.

AREA 57 serves as a multi-purpose environment where living, shopping, working, playing and socializing coexist.

Phase I - Building C includes 27 apartments, both 1 and 2-story units, and commercial space. Building D includes 25 apartments and commercial space.

Phase II - Building A includes 42 apartments and commercial space. Building B includes 45 apartments and commercial space. Buildings A & B will open Fall 2022.

Property highlights include a future outdoor programmable park, health and wellness focused businesses, along with a mix of retail to support the residential and commercial tenants.

NEIGHBORHOOD FEATURES

Population (No. of People)

.5 mile	1 mile	3 miles
61	2,257	28,099

Business (No. of Businesses)

.5 mile	1 mile	3 miles
5	43	1,121

Employees (No. of Employees)

.5 mile	1 mile	3 miles
67	547	15,525

Source: ESRI Business Analysis

**“A prominent complex that gives
Bismarck residents a space where
one can work, live, and play!”**



Zach Frappier
Director of Realty

701.388.9616 | Zach@EPICCompaniesND.com



BUY | SELL | INVEST
TRILOGY
— REAL ESTATE —
LOCATED AT 1010 MAIN AVE FARGO, ND

EC EPIC
COMPANIES
Investment • Development • Management